

# Earth connector

## "C" shape connector and jumper clamp

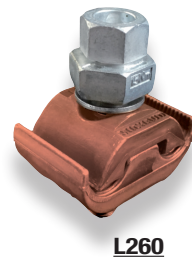


### Application

These connectors are designed to connect two conductors. The mechanical and electrical connection is ensured thanks to crimping (**U009**) or thanks to a mechanical tightening which can be removed (**U020**).

Code	Designation	Main conductor (mm <sup>2</sup> )	Tap conductor (mm <sup>2</sup> )	Weight (kg)	Sales unit
<b>"C" SHAPE CONNECTOR</b>					
U001	C CONNECTOR 4-4	2.5-4	2.5-4	0.010	10
U002	C CONNECTOR 10-6	6-10	2.5-6	0.010	10
U003	C CONNECTOR 25-6	10-25	4-6	0.012	10
U004	C CONNECTOR 25-10	16-25	4-10	0.012	10
U005	C CONNECTOR 25-25	16-25	16-25	0.017	10
U006	C CONNECTOR 35-25	35	4-25	0.017	10
U007	C CONNECTOR 35-35	35	16-35	0.034	10
U008	C CONNECTOR 70-35	50-70	4-35	0.034	10
U009	C CONNECTOR 70-70	50-70	35-70	0.034	10
U010	C CONNECTOR 95-35	70-95	16-35	0.072	10
U011	C CONNECTOR 95-70	70-95	35-70	0.072	10
U012	C CONNECTOR 95-95	95	95	0.131	10
U013	C CONNECTOR 120-120	120	25-120	0.109	10
U014	C CONNECTOR 185-95	150-185	50-95	0.109	10
U015	C CONNECTOR 150-150	150	70-150	0.109	10
U016	C CONNECTOR 185-185	120-185	95-185	0.131	10
<b>JUMPER CLAMP</b>					
U020	JUMPER CLAMP 6-16mm <sup>2</sup>	6-16	6-16	0.028	100
U021	JUMPER CLAMP 16-50mm <sup>2</sup>	16-50	16-50	0.061	100
U022	JUMPER CLAMP 50-70mm <sup>2</sup>	50-70	50-70	0.112	10
U023	JUMPER CLAMP 70-95mm <sup>2</sup>	70-95	70-95	0.263	10
U024	JUMPER CLAMP 95-150mm <sup>2</sup>	95-150	95-150	0.443	10
U025	JUMPER CLAMP 150-240mm <sup>2</sup>	150-240	150-240	0.750	10

## Copper connector



### Application

This **copper connector** is designed to fix up an installation in case the conductor has been severed. The **stainless steel fastening** allows the product to be buried. The connector L260 is equipped with a shear head.

Code	Designation	Main conductor (mm <sup>2</sup> )	Tap conductor (mm <sup>2</sup> )	Weight (kg)	Sales unit
L260	CONNECTOR Cu 10-70 (SF + SH)	10-70	10-70	0.120	50
L261	CONNECTOR Cu 10-70 (SF)	10-70	10-70	0.110	50

## Earth system disconnection kit

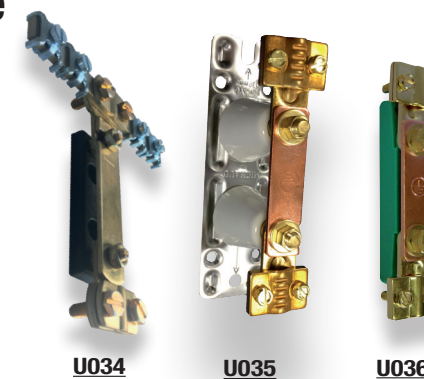


### Application

This **stainless steel kit** comprises two tubular lugs (**U030**) as well as a nut and a bolt. It is designed to disconnect the earth system in order to perform earth resistance measurements.

Code	Designation	Conductor section min (mm <sup>2</sup> )	Conductor section max (mm <sup>2</sup> )	Weight (kg)	Sales unit
U030	TUBULAR LUG 25-29	25	29	0.020	50
U031	EARTH SYSTEM DISCONNECTION KIT 25-29	25	29	0.060	20

## Ground cutting blade

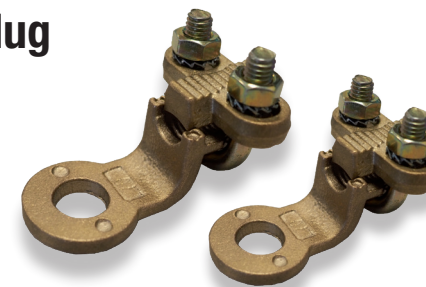


### Application

This cutting blade is designed to open the earth system during earth resistance measurements. It is rather used inside for a residential installation.

Code	Designation	Conductor section min (mm <sup>2</sup> )	Conductor section max (mm <sup>2</sup> )	Weight (kg)	Sales unit
U034	"T" SHAPE GROUND CUTTING BLADE	10	35	0.180	10
U035	HIGH GROUND CUTTING BLADE	16	35	0.3300	3
U036	LOW GROUND CUTTING BLADE	16	35	0.160	3

## Round terminal lug



### Application

This copper round terminal lug is used to connect bare copper conductors to copper terminals.

Code	Designation	Cable compatibility (mm <sup>2</sup> )	Drill hole compatibility (mm)	Weight (kg)	Sales unit
U018	STRAIGHT CABLE AND ROUND TERMINAL LUGS 10-70	10 to 70	13	0.081	10
U019	STRAIGHT CABLE AND ROUND TERMINAL LUGS 25-120	25 to 120	13	0.207	10